

*A Magazine
For the Villages of Folkington, Milton
Street and Wilmington*



September 2021

£1

**SAINT MARY AND SAINT PETER
WILMINGTON**

PRIEST

The Reverend Peter Blee
01323 870 512

CHURCH WARDEN

Mrs Julie Little
01323 871 557

Dates and Events for Your Diary

12th July	Long Man Parish Council Meeting	7.00 pm
8th September	`Zahed Tajeddin Workshop	All Day
11th September	`Ride and Stride	All Day
14th September	Film Night - "Judy"	7.00pm
15th September	`Zahed Tajeddin Workshop	All Day
17th September	`HOLY GROUND CONFERENCE	Three Days
23rd October	Spanish Night	7.00pm
30th October	Beowulf - An Anglo-Saxon Poem	6.00pm
4th December	Christmas Fayre and Coffee Morning	11.00am

FROM THE PARSONAGE

**‘HOLY GROUND CONFERENCE
17th – 19th September at Berwick Church**

It has been a stunning summer in terms of the abundance of wild flowers and richness of green growth. A good year to celebrate the environment at a time of climate crisis. This month there will be a conference at Berwick Church (17th-19th September) called ‘Holy Ground – Art, faith and the natural environment’. A range of speakers and artists will talk about the natural world, spirituality and creativity. Amongst the speakers will be the writer Nick Mayhew-Smith whose first major book ‘Britain’s Pilgrim Places’ (2011) was made into a BBC television series. Dr Louise Hampson has written about heritage and spirituality and will speak on ‘Movement and Stillness: Destinations and Journeys in Pilgrimage’. We also have two artists, Julian Bell and David Hansel who will talk about their commissions for Berwick church and the creative journey of making contemporary works of art for a specific sacred place. The well-known art scholar Frances Spalding, who has written biographies of Duncan Grant and Vanessa Bell, will consider the recently restored Bloomsbury paintings in Berwick church. Stephanie Fuller who is CEO of Ditchling museum, will talk about craft and its unique link with

place. The conference will include a walk of the Cuckmere Pilgrim Path on Sunday 19th September with James Aldridge, a visual artist who is passionate about the environment. He engages people in creative activities. His aim is to develop new ways of seeing and being in the world at a time of ecological crisis.

The conference is open to all and its possible to attend just parts of the conference. You can find more information about it and how to book on Eventbrite – search for ‘Holy Ground’. It’s a great opportunity to come and hear stimulating speakers from across the county in a local context and we hope that many people will take up this opportunity. It is also a chance to come, see and enjoy the restored Berwick church.

Peter Blee.

Holy Ground Conference at Berwick Church 17th – 19th September

In conjunction with Art + Christianity we’re hold a three-day conference at Berwick Church as part of our restoration project activities funded by NLHF. You can book for just one day. To find out more and to book please visit Eventbrite and search for ‘Holy Ground: Art, faith and the natural environment’. Please let others know about this. Please see information on the benefice website and you can print out the poster from there.

Zahed Tajeddin Workshops

Zahed has rescheduled his 2-day workshop for 8th & 15th September – bookable again on Eventbrite search ‘Zahed Tajeddin’. You need to attend both workshops. Zahed is from Aleppo and this promises to be a unique opportunity. A poster is on the benefice website with more information.

BENEFICE NEWS

Appointment of the Reverend Shirley Pearce

We’re delighted now to be able to announce the appointment of the Reverend Shirley Pearce as Associate Priest in this Benefice. She and her husband Doug will live in the vicarage in Wilmington. We hope that she’ll be able to start in the late Autumn, but a date has still to be decided by the Diocese.

Shirley writes:

'I am delighted that I will be coming to the benefice, and Doug and I look forward to settling into village life.

I am a very anglicised South African, whose grandmother was born and lived in Staffordshire

My career before ordination was nursing. I enjoy being outdoors and am a very happy gardener.

I look forward to meeting everyone and worshipping together in such beautiful churches'

Selmeston Church and Churchyard and Berwick Churchyard Books

Both books are fascinating insights into the history of the churches and churchyards and a useful source of information on local and family history. Selmeston book - £12.95 and Berwick - £11. Please let Stephanie know if you would like to purchase a copy.

'I DO SET MY BOW' Online Live Talk by Julian Bell

This is a still available YouTube programme, held on the 21st of June, where Julian Bell, in discussion with Peter Blee, talks about the development of his new painting **'I Do Set My Bow'** for Berwick Church which celebrates the completion of the restoration of the paintings in the church.

<https://youtu.be/EFs4E547URU>

FAMILY SUPPORT WORK: AUGUST 2021 UPDATE

Dear Friends,

The summer holidays are now in full swing and we are so pleased that we have been able to organise some activities for our families, who have been desperate for a change of scenery after all these months in lockdown. We have had

a day at Arundel Castle Cricket club, which included forest school and meditation and was greatly enjoyed by both parents and children. There have also been trips to the beach, circus visits as well as individual family outings for those who cannot cope with large groups.

Our foodbank is in greater need during these holiday weeks as we try to provide food which is normally given through free school meals, and we would like to thank all those who have been collecting for us. Although our stores have improved a little, we are still in need of most items to keep the shelves adequately stocked – particularly tinned fruit and vegetables, jams and spreads.

We held our first staff day in the middle of July, which was the first time for 2 years that the whole staff team were able to see each other in person and catch up on each other's news. It was wonderful to share stories, and we were delighted to have been joined by the outgoing Lord Lieutenant of East Sussex, Sir Peter Field. You can see photos from the day on our Facebook page.

We are looking forward to our sponsored walk from Amberley to Arundel later this week, our first mass participation event for such a long time. We have also recommenced our speaking engagements at churches and have been delighted to update congregations on our activities over the last 18 months. If you would like to invite us to speak at a service then please get in touch with the office on admin@familysupportwork.org.uk

Thank you all for your continued support and prayers as we look ahead to September and the recommencement of a more 'normal' working pattern.

July's work in numbers

236 individual visits and 243 support calls with families supporting 33 grandparents, 295 parents and 341 children
60 supported meetings with other agencies carried out remotely
28 face-to-face group sessions held
358 food deliveries made

Prayer points

Give thanks for the opportunity to spend time together as a staff team and support each other
Pray for those children who will be receiving exam results in the coming weeks and the important choices they will be making
Pray for the work of our Family Contact Centre in Eastbourne, run jointly with Mothers' Union, as many more families are needing this important service

Nikki Kerr
FSW Director of Fundraising and Marketing

Beowulf - An Anglo-Saxon Poem in an Anglo-Saxon Church

**Saturday 30 October 2021, 6.00, starting in Arlington Village Hall
and then in St Pancras Church**

No-one knows exactly when, after a day of hunting or fighting, at the end of a feast, a bard first stood up in a Saxon mead-hall and entertained the warriors with the story of how Beowulf, mighty leader of a band of brave warriors, crossed the sea to the land of the Scyldings and fought the ravening monster Grendel.

No one knows, either, exactly when the first place of worship was built on the spot where St Pancras Church now stands, but it is quite likely that the first building, remains of which were discovered under the floor during Victorian restorations, was built at the same time as that unknown bard first raised his voice over the din in that unknown mead-hall.

So it's entirely appropriate that the launch of the Friends of St Pancras Arlington's huge fundraising effort to make St Pancras secure and welcoming for our community and congregation for the next thousand years should start with a performance, in English (with occasional lines in Anglo-Saxon!) of "Beowulf" by Michael Bloom.

Michael is a semi-professional actor, having started his acting career with the National Youth Theatre and appearing in over a hundred plays and operas in the UK and abroad. Locally, he has supported fundraising through his acting talents, devising and performing his one-man show "Coleridge: the Man and the Mariner" at Arlington. He also performed in Berwick Church in "Boys Ellman" and at London's Royal Institution, and Berwick, in "Bloomsbury, Bloodshed and the Bible" to help raise funds for restoration of the Berwick murals.

Michael says: I first encountered "Beowulf" and Old English as a student of English and Drama and hope you enjoy this performance, which includes all the major events of the poem, but cut to about half the length of the original 3182 lines. This translation is mostly modelled on Michael Alexander (Penguin edition), further inspired by my wife Nicola and by Julian Glover's adaptation for his own celebrated "Beowulf" performances, plus some of my own translation. It includes a few short passages in Old English to give a flavour of the amazing power of the original language of this supreme poem. This performance features replicas of several of the artefacts found in the Sutton Hoo burial mound including one of the iconic Sutton Hoo helmet.

The performance starts in the Village Hall at 6.00, where there will be a chance to take some refreshment and look at an exhibition about the poem and the finds at Sutton Hoo, and then cross to the church (a mead-hall for this occasion!) where the performance will start at 6.30. There will be a short interval at about 7.10, in the church, followed by the second half and then a hog roast (with vegetarian options – please let us know in advance) in the Village Hall car park at about 8.00. Please wrap up warmly and feel free to bring your own tankard or drinking horn!

Tickets available from trybooking www.trybooking.com/uk/BFGB, or go to trybooking.com and enter Beowulf

For queries, please contact Nicola Bloom at bloomnicola@yahoo.co.uk, or on 07787 928029 / 01273 487867

Good News: Our Churches Remain Open For Private Prayer.

We are delighted that Government regulations now permit us to open our church buildings for services and individual prayer and hope that anyone wishing to do so will feel safe to enter.

All churches in the Benefice are open every day and opening patterns are the same as they were previously in each parish.

The term individual is defined as follows: "A person or household entering the venue to pray on their own and not part of a group led prayer or communal act." (Robert Jenrick announcement)

If you do wish to use the church for private prayer, please be mindful of the importance of following government advice in respect of hand washing and social distancing.

Notices have been put up on church noticeboards, on the church doors and at the entry and exit points for each church, to provide specific guidance about the safety and hygiene arrangements in each church, as details may differ slightly due to the differences in the church buildings. For example: in some churches pews may be roped off to limit the amount of routine cleaning required and in some churches there is access to running water. Please read these notices carefully before entering the church.

- Hand sanitiser has been placed in the porch area of each church and also inside the church near the door.
- Please use this before entering and when exiting the church. NB. it is still wise to wash and dry your hands thoroughly with soap and water as soon as you get home, as an extra precaution.
- Please observe the social distancing rules and maintain a distance of 2 metres between yourself and others not in your household whilst in the church. Individual churches may have additional guidance about this so please observe any specific measures which have been put in place in individual churches.
- If the church appears too crowded to facilitate social distancing, please wait outside until it is safe to enter.

Please do not enter the church if you or anyone in your household has symptoms of Covid 19 or if you have been advised to self - isolate because you have been in contact with someone who has tested positive.

Cleaning schedules have been revised to ensure door handles, light switches and other areas likely to have been touched by others are cleaned daily when the church is opened but please be mindful of the fact that surfaces might have been contaminated later in the day and avoid touching surfaces unnecessarily.

Please note that we now have permission to resume funeral services. Contact the Reverend Peter Blee for further guidance on this. Contact details: **The Reverend Peter Blee – peter.blee@berwickchurch.org.uk or 01323 870512**

WILMINGTON NEWS

Jan & Mark's Wedding

Jan & Mark were married at St. Mary & St Peter's church in Wilmington on Saturday 14th August, 2021. Before the day itself, they cleared the path from the church to the hall along the road, the steps and among other things the Pound and the War memorial, even planting flowers there. They worked many hours on several days, and

many trips to the tip, to dispose of the weeds, silt and leaves etc. Thank you to them both for their hard and dedicated work in our lovely village.

The church was the perfect setting, the arch by Diana from Arlington set the tone and quality of the floral decorations within the church itself. Christine Bivand did a spectacular floral display, Margaret's 'pew posies' were exquisite and

Vivi's altar display was as stunning as usual. A violinist played under the old yew tree to welcome the wedding party and the guests as they arrived.

Jan looked amazing, really lovely in her elegant white dress and Mark also, dressed up to the nines on this special day. The village hall was unrecognisable, with decorated chairs, balloons and beautifully laid tables. There was an amazing reception and hog roast with music and dancing until 11.00pm to end their most perfect day.

We all wish Jan & Mark many more happy years together.



The Giants Rest in Wilmington And Ongoing Contact The WhatsApp Group ...

Hello,

After some recent radio silence, just to let you know that after an application by the Long Man Parish Council to Wealden, as of Friday 20th August the Giants Rest is now an 'Asset of Community Value'.

This means that (for at least 5 years) the Giants Rest has to now be sold as a pub, unless disposed of otherwise by gift.

The Giants Rest cannot now be sold for residential use.

Should the local authority be told that it is to be sold, we (the community) have 6 weeks to say that we are going to submit a bid. A further 4~ months can then be used by the community to submit a bid, so we have 6 months leeway.

This gives us the opportunity to put a bid in for the pub if we want to.

I have set up a WhatsApp group, and will invite you on your number that you submitted from our June meeting, with a link.

If you or interested outsiders, want to join and have not received a link in the next couple of days, please see the Wilmington Facebook page, WhatsApp me on 07785 580 752, or text the same number.

We can form a group of interested parties to discuss the way to go ahead for the pub, plus we can also have a group for our wider Wilmington issues.

Please join ...

**Best Wishes
Jeremy**

RIDE & STRIDE **Saturday 11th September 2021**

After the cancellation of last year's Sussex Churches Ride and Stride event, we are pleased to announce its return!

Ride & Stride is an annual sponsored event that raises funds for maintaining historic church buildings by helping to fund urgent repairs and the installation of modern facilities. Many of us appreciate our beautiful churches here in Sussex and are glad to use them for worship, concerts, festivals, weddings and other events. If you would like to ride or stride on Saturday 11th September for Wilmington, please get in touch with me. Further details can be found at:

www.sussexhistoricchurchestrust.org.uk/

You can visit any churches singly or in a group, and you can ride or stride as few or as many miles as you choose.

Supported by The National Churches Trust and in partnership with county based local churches trusts, Ride & Stride opens the doors to some of England's most rare and unusual churches, chapels and meeting houses. Wilmington Church will be manned throughout the day.

For those of you unable to take part, please consider sponsoring someone riding or striding. Thank you.

Tim Berrett
07771 641856

POPPY APPEAL

30TH OCTOBER - 13TH NOVEMBER 2021

This year is the 100th anniversary of the founding of the Royal British Legion and it is hoped that it will be a bumper year for fund raising. Covid 19 permitting, house to house collections will be allowed again. If anyone is willing to help with door to door poppy sales in Wilmington (north of the A27) please either phone or text to: 07799 418364. Thank you very much.

Nigel Willson
Hon. Poppy Appeal Organiser

Donations to Wilmington Parish Church

If you would like to make regular donations by Direct Debit please visit www.parishgiving.org and enter Parishcode 103050475 and follow the links.

'One-off' donations can be made by Bank Transfer to Wilmington PCC: Sort Code: 20-27-91, Account: 60970956. There is, also, a new fangled device within the church where credit/debit card donations can be made.

All donations most gratefully received.

LONG MAN PARISH COUNCIL

Below are the notes taken from the Unadopted Minutes of the Annual Parish Meeting and the Parish Council Meeting. The Unadopted Minutes are circulated to the Parish Councillors and subsequently considered at the next Parish Council Meeting and if agreed, are signed as a true record. The Minutes can only be publicised after they have been approved, therefore in order for there to be no undue delay in keeping the residents of the parish informed about the meetings, the notes are printed in the Parish Magazine. The approved minutes are posted on the notice boards and on the website (www.longmanpc.org) shortly after the meeting in which they are approved.

NOTES ON THE LMPC MEETING

Held on Monday 12 July 2021 at 7.30pm at Wilmington Village Hall

Those present were Councillors Pam Merritt (Chair), Tyler Butterworth (Vice Chair), Jeremy Christey, Lizzie Chisholm, Claire Church, Helen Baulcombe, County Councillor Stephen Shing
 Claire Reynolds (Clerk). Councillor Merritt Chaired the meeting and welcomed everyone. Apologies for absence were received by Cllr Michael Bridges and District Cllr Michael Lunn. There was no Declaration Of Interest and no Public discussion.

The Minutes of the meeting dated 5 May 2021 were approved and signed as a true record – there were no Matters Arising.

The Minutes of the Emergency Meeting dated 21 June 2021 were approved and signed as a true record. This was held to discuss whether the Giants Rest should be nominated as an 'Asset of Community Value' (ACV). It was agreed to submit an ACV nomination form to WDC.

Update on LMPC's nomination for The Giants Rest to become an Asset of Community Value

(ACV). - Acknowledgement of the ACV nomination had been received from Wealden District

Council and they will make a decision by the 20th August 2021.

Report of the County Councillor – Councillor Stephen Shing - Cllr Shing was congratulated on being re-elected at the last Election.

- a. Cllr Shing now sits on three ESCC Scrutiny Committees – Roads and Highways, Police and Crime and Schools and Children. Following the Election there have been quite a few changes in Councillor personnel which is quite challenging but also good for the County.
- b. Exceat Bridge Planning Application has now been made to South Downs National Park Authority. Councillor Shing encouraged LMPC to submit comments as it is within the neighbouring parish. Clerk to email round the Planning Application to Councillors.
- c. The Seven Sisters Country Park transfer of ownership to the South Downs National Park Authority should happen within the next two weeks. A Councillor will be appointed to South Downs National Park Authority to represent East Sussex County Council.
- d. ESCC have just published their consultation on the A22 and A2290. Councillors had been given this document at the start of the meeting. Councillor Shing encouraged members of the public to submit their comments between the 12 July and 5.00pm on the 20 August 2021. Clerk to put details of this on the LMPC website.
- e. Cllr Shing has met with the new PCSO for the area.
- f. Cllr Shing had responded to Cllr Christeys question regarding the provision of super high speed fibre broadband in Wilmington. There is fibre broadband already in Wilmington but it is not super high speed.

Report of the District Councillor – Councillor Michael Lunn – Not present - no report.

Reports of the Parish Councillors

Folkington - There are still a large number of visitors to Folkington. Dog mess is still an issue and signs will be going up encouraging dog owners to take it home with them.

Milton Street - Councillors Butterworth and Baulcombe are investigating the possibility of introducing a 30mph speed limit through Milton Street, as it is being used as a 'rat run', especially whilst the current road improvements are taking place at Drusilla's Roundabout. Speed limits are determined - based on the proximity of houses to the road and the number of fatalities. Councillor Church - suggested '20 is plenty' signs be obtained. Councillors Butterworth and Baulcombe will email Councillor Shing with their concerns and ask for his assistance with this.

Wilmington - Councillor Merritt reported that the path from the car park to the bottom of the footpath up to the Log Man has been cut back by East Sussex

Rights of Way Maintenance Team. A group of parishioners are in the process of clearing the path from The Vicarage up to the Church.

Report of the Tree Warden – Alison Cotton - The following report had been submitted in the Tree Warden's absence at the meeting:

Next week I am meeting Sonia Lorenzo Martin, Landscape and Biodiversity Lead. Sonia has taken over from Andy Player, who set up the project Bringing Back Elms to the Downs.

Sonia is coming to look at some of the elms we planted over the last 2 winters, as part of this project, and will advise regarding future planting sites, following my request for more trees this winter.

I will be seeking tree recipients over the coming weeks, i.e. parish residents who are within the SDNP (south of the A27) who would like to plant Dutch Elm Disease resistant elms provided free in return for a commitment to plant and nurture them.

Corona Virus - Regular updates are being received from the Wealden Community Hub and there are links on the LMPC website.

A27 news - Regular updates on the A27 junction improvements are being received and circulated out to Councillors and put on the LMPC website. Clarification regarding the Wilmington junction works to be sought by the Clerk from Highways England as no information has been received to date.

Report of the Clerk to the Council - Finance Report and agree the accounts for payments.

The report was circulated at the meeting which revealed a bank balance of £13,173.07 in the Current Account (as at 29 June 2021). This figure included the £3690.95 which had been transferred into the account from the closure of the LMPC Savings Account and £250 for the Milton Street Phone Box Fund.

C Reynolds (Clerk's Salary for April 2021 and May 2021)	£742.56
Mulberry and Co I(Intro to Planning Course for Cllr Butterworth on 29/07/21)	£72.00
Cuckmere Buses (2021 grant request)	£150.00
Cuckmere Flood Forum (2021 grant request)	£70.00
Wilmington Village Club (annual contribution for the use of the Village Hall)	<u>£450.00</u>

TOTAL: **£1484.56**

Correspondence / Matters arising - On-line Banking to be discussed at the next meeting.

Planning - Applications and Decisions received and observations made since the last meeting.

South Downs National Park Authority - SDNP/20/04066/FUL – OLD SCHOOL HOUSE, FOLKINGTON LANE, FOLKINGTON, BN26 5SD - Change of use from annexe to separate tourist accommodation. No change of use or Development apart from the above and relying on previous extant approvals. - **LMPC supported this application (via email correspondence). Decision: Pending**

SDNP/21/01808/HOUS – LARK RISE, FOLKINGTON LANE, FOLKINGTON, POLEGATE, EAST SUSSEX, BN26 5SD

Description: Erection of detached garage building and detached summerhouse building. **LMPC supported this application (via email correspondence). Decision: Pending**

SDNP/21/01300/HOUS – HUNTERS DENE, THE STREET, WILMINGTON, BN26 5SL - Description: External alterations and refurbishment to outbuilding (including insertion of 3no rooflights). **LMPC supported this application (via email correspondence). Decision: Pending**

SDNP/21/02978/CND – TREK END, THE STREET, WILMINGTON, BN26 5SQ - Description: Removal of agricultural occupancy condition (condition 2) attached to K/62/1563. **LMPC had no objection to this application. Decision: Pending**

Wealden District Council

WD/2020/2388/FA - MILTON GATE FARM, MILTON STREET, POLEGATE, BN26 5RS Description: VARIATION OF CONDITION 4 OF WD/1994/1767/F (ERECTION OF NEW FARMHOUSE) IN ORDER TO VARY THE AGRICULTURAL OCCUPANCY CONDITION TO LIMIT OCCUPANCY TO A PERSON SOLELY OR MAINLY EMPLOYED AS AN EQUESTRIAN OPERATOR OR A DEPENDENT OF SUCH A PERSON RESIDING WITH HIM OR HER

LMPC had no objections to this application. Decision: Approved 25/03/2021

WD/2020/2408/F – MILTON GATE FARM, MILTON STREET, POLEGATE, BN26 5RS

DEMOLITION OF EXISTING FARM BUILDINGS AND ERECTION OF A BLOCK OF 10 STABLES TO HOUSE POLO PONIES, HAY STORE, FEED

STORE, TACK ROOM, STAFF OFFICE / TEA ROOM AND STORAGE; AND ERECTION OF A WILDLIFE TOWER. **LMPC objected to this application.**

Decision: Pending

WD/2020/2407/MAJ – MILTON GATE FARM, MILTON STREET, POLEGATE, BN26 5RS

CHANGE OF USE FROM AGRICULTURAL LAND TO A PRIVATE POLO CENTRE INCLUDING PROVISION OF POLO PITCH WITH ANCILLARY ENGINEERING WORKS TO CHANGE LEVELS; AND WILDLIFE POND; AND TEMPORARY WIDENING OF AGRICULTURAL ACCESS TRACK. **LMPC objected to this application. Decision: Pending**

WD/2020/2265/F & WD/2020/2266/LB – HAYREED BARN, HAYREED LANE, WILMINGTON, BN26 6RR Description: CONVERSION OF EXISTING BUILDING TO CREATE SELF-CONTAINED ANNEXE. **LMPC had no objections to these applications. Decision: Pending**

WD/2021/0736/F – THE OLD HIDES, BAYLEY’S LANE, WILMINGTON - Description: Conversion of vernacular barn to single dwelling including new access and drive. **LMPC had no objections to this application. Decision: Pending**

WD/2021/0664/MFA – LAND AND BUILDINGS AT NATEWOOD FARM, POLEGATE ROAD, HAILSHAM, BN27 3PH - Description: MINOR MATERIAL AMENDMENT TO WD/2017/2261/MAJ (PROPOSED DEMOLITION OF EXISTING FORMER FARM BUILDINGS AND REMOVAL OF PHOTOVOLTAIC SOLAR ARRAY INSTALLATION, AND CONSTRUCTION OF COMMERCIAL UNITS (B1b&c) AND STORAGE AND DISTRIBUTION (B8), WITH REPLACEMENT ROOF MOUNTED SOLAR ARRAY) INVOLVING VARIATION OF CONDITION 26 TO ALLOW FOR ADDITION OF WINDOWS AND PERSONNEL DOORS TO PROPOSED BUILDINGS AND INCREASE IN HEIGHT OF APPROVED ROLLER SHUTTER DOORS. **LMPC had objection to this application. Decision: Pending**

Correspondence with SDNPA / WDC: An invitation had been received from SDNPA to a virtual meeting on the 26 March 2021 with regards to an Update on Seven Sisters Country Park prior to the South Downs National Park Authority taking full ownership. This had been circulated to Councillors.

Representation feedback from:

Wealden District Association of Local Councils – Correspondence received had been emailed round to Councillors.

Cuckmere Flood Forum - Correspondence received had been emailed round to Councillors.

Date of next meeting - Monday 13 September at 7.30pm in Wilmington Village Hall. This is subject to Government Regulations regarding Covid. Councillor Christey gave his apologies for the September meeting.

There being no other business the meeting was declared closed at 8.35pm.

The Clerk for Long Man Parish Council is:

Claire Reynolds, 32 St Mellion Close, Hailsham, East Sussex, BN27 3UY

Email: longmanclerk@gmail.com Tel: 01323 843927

Clerk's hours are part-time (7 hours a week) and that generally she will be working for LMPC on Monday, Wednesday or Fridays.

Please feel free to email at anytime but please note they will only be picked up during working hours.

No phone calls after 6.30pm please.

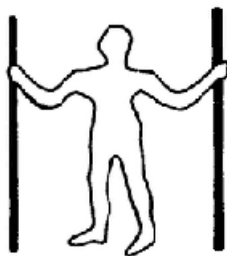
Please let the Clerk know if you need the contact details of your local Councillor.

CoronaVirus Parish Assistance

If anyone is requiring assistance during the current situation please do not hesitate to contact Mrs Claire Reynolds, Parish Clerk, Long Man Parish Council in the first instance

LOCAL DIRECTORY

Arlington P.C.C. Secretary	Diana White	01323 870680
Wilmington P.C.C. Secretary	Ian Coombs	01323 870638
Chairman, Village Club	Ruth Zacharewicz	01323 871644
Wilmington Village Hall Bookings	Christine West	01323 870426
Wilmington Art Group (at Arlington now)	David Wilson	01323 506108
Clerk to Long Man Parish Council	Claire Reynolds	01323 843927
Long Man Tree Warden	Alison Cotton	01323 871581 or 07773 481492
Police Cover Team - Hailsham	Sgt. Howard Nevill	0845 6070999
Fly Tipping Inspector(?)	Connects to Wealden Reception	01892 653311 Ext. 2723
Magazine Editor (john@imacademic.com)	John Marshall	copy by email
East Sussex County Council	Lewes	0345 6080190
Member of Parliament	Maria Caulfield	
maria.caulfield.mp@parliament.uk		
County Councillor	Stephen Shing	01323 489265
Long Man District Councillor	Michael Lunn	07894 062727
	michael@michaellunn.co.uk	
Police Cover Team - Hailsham	Sgt. Howard Nevill	0845 6070999
Wealden District Council	Crowborough	01892 653111
	Hailsham	01323 443322
ESCC Highways		0845 608019310
Sergeant Mark Ritchie, Local Police		mark.ritchie@sussex.pnn.police.uk
Police:	non emergency 101, emergency 999, voice mail 101 ext. 19028	
PCSOs Janine Daly and Liz McDonagh	07787 685751 or 101 or 01273 470101	



WILMINGTON, FOLKINGTON AND MILTON STREET VILLAGE CLUB

Committee Meeting Wednesday 14th July 2021 held at 7.30 in Village Hall, Wilmington

The Wilmington, Folkington and Milton Street Village Club met in person on 14th July for the first time for nearly 18 months in order to reopen the Village Hall to events. It reviewed Covid rules, had the water system tested, reviewed gardening, maintenance and cleaning arrangements and finances. It hosted a – well attended - outdoor drinks party on 24th July at the Hall after Covid restrictions were lifted and is looking at further events in the autumn.

What is the Village Club? It is a charitable trust that has the responsibility to look after the Village Hall in Wilmington on behalf of all the residents of the three villages. You may not know this (I didn't until recently) but if you are a resident of the villages (and over the age of 8) you are automatically a member of the Village Club. Welcome to all recently arrived residents!

The trust is run by a management committee, a group of about a dozen volunteers from the three villages that stands for election every year at an annual general meeting in February/March (to which all members of the Club are invited). The committee, of which I am the recently appointed temporary chair, is tasked with raising a certain amount of money every year to keep the Hall and grounds maintained. So it organises occasional events open to all villagers – like film nights or the 'Spanish evening' on 23 October or the Christmas Fayre on 4 December, though you do not have to be on the committee to run a public event. It also makes the Hall available for private hire. It is suitable for parties, weddings, group meetings or classes of all kinds. We are in the process of updating the website to make hiring information more easily available. All other suggestions welcome.

Ruth Zacharewicz

VILLAGE PARTY

Finally, the village got together after many months of self isolating and we also welcomed new residents to Wilmington. It was the most brilliant evening with blue skies and warm sunshine and an enormous turnout for the first social event of 2021. Billie, Belinda & Melissa organised a wonderful party with the help of the entire committee of the village club. The bar was a great success thanks to Melissa & Abey with a great choice of Pimms, Beers & Wines and they worked tirelessly throughout the evening. The buffet was supplied by some villagers and committee members and the table was almost overflowing, everything was home-made and absolutely delicious. Thank you to everyone concerned.

It was also amazing to see so many children in Wilmington and all were particularly welcome. Nigel Wilson came with his three, Vicki and friends from Milton Street brought along little ones and Kelly, her daughter Lowri. There were others which unfortunately have gone unmentioned but hopefully will be regular visitors. With this number and hopefully many others, we are thinking the very popular Children's Christmas Party may be on the calendar again this year.

We would all like to take this opportunity of giving a warm welcome to those new residents that came on Saturday. We now have Simon, Becca & little Sandy in 'Crofters', Jackie & Andrew in 'Applegate', Scarlett at 'Twyttan House', Sarah & Ivan at 'Sundown' (Well done Sarah on winning the £100, we were all hoping our number had come up for that!) and Ruth & Andy at 'Street Barn'. We also understand we have Mark & Claire at 'Pond Cottage'. and Katie & Tom at 'Cherry Tree' who were unable to come but a big welcome to them also. If there is anyone that has been forgotten, sincere apologies and hopefully we will catch up with you in due course.

The Parish Magazine will publicise all future events and we urge you to check them out and make a space in your diaries - they are always worth a visit! Coming soon will be an International Foodie Evening, Film Nights starting again in the Autumn (glass of wine included) and the Christmas Coffee Morning, a very popular event not to be missed with Home Made Produce, Cakes etc. Raffle, Tombola and an enormous Bric-a-Brac table of quality goods. So start putting your unwanted gifts to one side and collecting good household items you no longer use. These are all welcome and will raise money for the Village Hall. Details nearer the time.

Film Night

14th September



Future Film Nights

12th October: Film Night - Film to be confirmed

9th November: Film Night - Film to be confirmed

14th December: Film Night - Film to be confirmed

Spanish Night: 23 October, 7.00pm



Wilmington, Milton Street &
Folkington Village Club

Food Drink & Music

SAVE THE DATE

***More Details To Follow:
Tickets will be sold in advance***

Drusillas Welcomes Ape-solutely Adorable Endangered Baby Monkey

Drusillas Park near Alfriston are overjoyed to announce the safe arrival of their ape-solutely adorable newest zoo born - a critically endangered Sulawesi crested macaque baby.

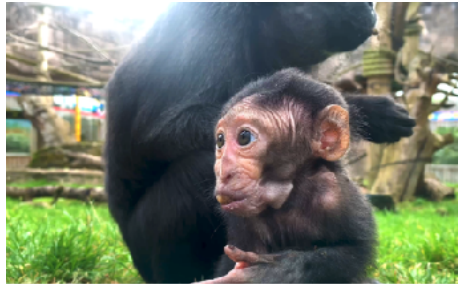


The Zoo team are elated to confirm that the cheeky babe, born on 22nd June to mum Kera and dad Moteck, is perfectly healthy, happy and headstrong, as it starts to brave life outside of the protective hold of its mother. The super cute infant has been delighting visitors this week by trying out some climbing, swinging, tumbling... and falling!

Black crested macaques are known for their jet black hair, striking amber eyes, and bright pink bottoms - although the youngest member of the Drusillas macaque troop will not develop these physical attributes for some months, and visitors should look out for a sweet hairless pink face this summer.

Head Zookeeper, Gemma Romanis, commented: "We are chuffed to bits to confirm that both mum and baby are making excellent progress, and we are starting to see baby out and about bravely exploring. Kera is a brilliant mother; she was a total natural with her first born, Mango - who was born at Drusillas three years ago - and she's proving herself once again with the new little one. We are really proud of Moteck too; it is great to see him getting really stuck in as a dad again."

The Sulawesi black crested macaque is categorised as critically endangered in the wild, and is one of over 20 different endangered and rare species living at the East Sussex Zoo. Sadly the macaque population has declined by 80% over the last 40 years. The principal threat to their survival is over-hunting for meat. In Indonesia the macaque is considered a delicacy, and is often served for special occasions. Deforestation is another major threat to the species, with large areas of their habitat now being cleared for coconut plantations, garden plots and roads.



"As well as being totally adorable, the cause for celebration is that much more when we successfully breed a critically endangered species at Drusillas." Continued Gemma, "The healthy arrival of this pair's second baby provides a crucial boost for the macaque population, and we're all really proud to play our part in keeping this beautiful primate from extinction." Thousands of people put forward names on the Park's Facebook naming challenge at the beginning of August, and Drusillas have now confirmed that the baby has been named Kiwi! Photos and videos of the pink-faced tot can be found on the Park's Facebook page <https://www.facebook.com/drusillaspark>.



Many of the animals at Drusillas are involved in breeding programmes, often monitored by studbook keepers, to ensure the future survival of the species. Primates in particular are a cause for concern due to the threat of extinction in the wild. Drusillas is proud to be doing their part to safeguard the species and ensure that these amazing monkeys do not become extinct.

Located just off the A27 in Alfriston, Drusillas Park is open daily from 10am. For more information please telephone 01323 874100 or visit www.drusillas.co.uk

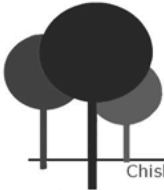
HUNTER
LANDSCAPES
OVER 25 YEARS EXPERIENCE

**ALL
GARDEN
DESIGN,
CONSTRUCTION
and
MAINTENANCE**

L. Hunter *N. Hunter*

18 KAMMOND AVENUE,
SEAFORD,
E.SUSSEX
BN25 3JL

Tel: SEAFORD (01323) 898401
NEWHAVEN (01273) 516640
PEACEHAVEN (01273) 587296
SEAFORD (01323) 893025
Mobile: 07885 474424



CLDC

Chisholm Landscape Design and Contracting

Folkington + surrounding areas
www.cldc.org.uk
info@cldc.org.uk
+44 (0)7766025573

Barn Construction
Foundations
Groundworks
Landscaping
Fencing
Garden Maintenance



OUR SEPTEMBER PUZZLE PAGE

We have 2 SUDOKU PUZZLES to keep you busy ~
graded as :

1 : EASY

5			9				2	
		4	3			8		
9	8		5			6		
								1
		9			1		4	6
			2	8		3		
7				4				
	4					1		
6			8		3		9	

& 2 : DIFFICULT

	4			3		1		
5						3	8	
	1		6		9			
				4	3			
3		7		6		2		4
			1	5				
			4		1		9	
	7	4						2
		9		7			5	



Support with
Confidence
ALYSON BURGESS
DISTRICT NURSERY COUNCIL

Home and Pet Care Specialist

(Incorporating Book a Cook & Gorgeous Gardens)



NEW *Catering in the comfort of your own home*



NEW *Lawn cutting, Weeding, Trimming etc.*



Transportation to the Shops, Doctor
or Hairdresser



Pet Feeding, Dog Walking, Pet/House Sitting
and Animal Boarding



Household chores



E.F.L. Coaching also available



Home Car Valeting Service

Reasonable rates (including weekends)

Fully Insured & D.B.S. Checked (references available)

Regular or Occasional

Tel: 01323 648179 Mobile: 07962 208847

www.eastsussex1space.co.uk

www.facebook.com/choresandpaws

Email: choresandpaws1@btinternet.com

YOGA YIPPEE!

JEVINGTON VILLAGE HALL



Mondays:

6-7pm – Beginner's/Gentle

7.15-8.30pm – Intermediate

Tuesdays:

9.45-10.45am – Beginner's/Gentle

11am-12pm – Beginner's/Gentle

7-8pm – Beginner's/Gentle

Also:

private 1:1 classes, workshops, holidays
and Thai yoga massage

PLEASE RING JO FOR DETAILS

07729 686777 www.wildyogis.co.uk jo@wildyogis.co.uk

THE HAIR SHOP

Unisex Hair Salon

Modern Approach – Traditional Values

Open Monday – Saturday

01323 487373

9 High Street Polegate

BN26 5EP

Specialising in Modern Cuts, Colouring and Styling

MATRIX RETAIL STOCKIST

Also selling Good Quality Hair Straighteners,
Brushes, Rain Hats, Nets etc.

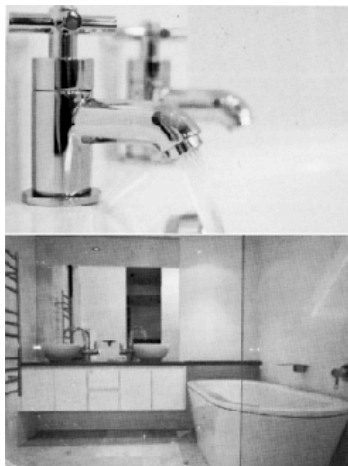
Tights, Stockings, Knee Highs, Ankle Highs, Foot-Socks etc.



Ben Kilshaw Plumbing

A friendly and reliable service from a local qualified plumber

Leaky taps & burst pipes	Radiators & heating
Blockages, drains & gutters	Hot water cylinders
Toilets, sinks, showers & baths	Maintenance & repair
Bathroom design & installation	General pipe-work
Oil boiler breakdown & servicing	



From tap washers to ensuites & everything in-between call:

07979 497225

Free estimates given

Lawson Lewis Blakers

SOLICITORS

- Residential and Commercial Conveyancing
- Wills, Probate, Trusts and Tax Planning Advice
- Landlord and Tenant Matters
- Accident and Injury Claims
- Matrimonial (Family) and Childcare
- Employment Law
- Charity Law
- Criminal Law

Offices at: 11 Hyde Gardens, Eastbourne Tel. 01323 720142
 Meridian Chambers, 10a Horsham Avenue, Peacchaven Tel. 01273 582680
 Suite 4, Sackville House, Brooks Close, Lewes Tel. 01323 480234

www.lawsonlewisblakers.co.uk

SRA No. 627540 (Eastbourne)
 628244 (Peacchaven)
 628195 (Lewes)



Our services include:

Sockets & switches
 Replacement fuse boards
 Internal & external lighting
 Electric showers
 Cookers
 Extractor fans
 Smoke detectors
 Garden lighting
 Log cabin supply installation

Fault finding & rectification
 Electrical maintenance and repairs
 Electrical testing & reports
 Network cabling
 Fire/security systems
 Full and partial rewires
 Hot tub wiring installation
 Emergency lighting

Office number: 01323 653742

Mobile: 07429379495

CHRIS BONUS

Alfriston based plumber

Tap Washers to Bathrooms

*Specialising in Kitchens, Power Showers,
 Wet Rooms and Bathroom Installations*

Excellent References

01323 870770

ANIMAL MAGIC

PET CARE SERVICE

Dog walking

Home visits for dog/cat/rabbit/chicken feeding

Day crèche for dogs. Holiday cover.

Dog boarding in our family home.

Help with horses or any farm animal.

Experienced with excellent references.

CRB police checked and Insured.

01323 870770

D. NOWICKI**Painting and Decorating****Artexing and Plastering****Interior and Exterior,
with over 25 years
experience.****Fully insured,
references available****Tel: 01323 490528****Mob: 07971 271861****E-mail: nowicki@talktalk.net***Folkington, East Sussex
a Village History*

by Eric Beavis, revised by Hilary Beavis

Revised edition to update research in 1986. Historical charts record the village as peaceful and tranquil within the South Downs National Park. Descriptions of the Church and Churchyard with its notable memorials to the cookery writer Elizabeth David and the harpsicord player Violet Gordon Woodhouse are included.

A section added outlines changes that have occurred over four decades within the A27 boundaries of the South Downs National Park.



To buy a copy of the book please e-mail
Beavis401@btinternet.com for an Order form

Mrs Chloe Burrell**B.S.c Hons, M.C.S.P., S.R.P.****Chartered Physiotherapist****Home Visiting Service****01323 811189****IICPC Registered**

BERWICK POST OFFICE

Berwick Station

Sweets, tobacco, stationery, greetings cards,
jigsaw puzzles

SUPPORT YOUR LOCAL POST OFFICE

Daily 9.00 - 1.00 — 2.15 - 5.30

Weds & Sats 9.00 - 12.00

ALFRISTON 870358

Oliver Sweeps

Friendly Reliable
Chimney and Flue Sweep
Trained by The Institute of
Chimney Sweeps



Contact: Oliver

07510191540

oliversweeps@gmail.com

Servicing
Eastbourne and
Surrounding Areas

Abbeyfield in Alfriston

Security, independence and peace of mind

- Company and Support
- Fresh home cooked meals included
- Independence, privacy and choice
- Your own private studio accommodation
- Clear all-inclusive pricing

We are also in Eastbourne, Hove,
Heathfield, St Leonards & Turbridge Wells.
Call us on 01323 870587
email alfriston@abbsd.co.uk
or visit www.abbsd.co.uk



Abbeyfield
South Downs
Making time for older people

Independent
Supported Living
for Older People

GSF ELECTRICAL SERVICES

LOCAL DOMESTIC & COMMERCIAL ELECTRICIANS

EXTRA SOCKETS, REPLACEMENT FIXTURES & FITTINGS, CONSUMER UNIT UPGRADES,
BOILER WIRING, GARDEN LIGHTING DESIGN & INSTALLATION, FAULT FINDING & REPAIRS
PAT (PORTABLE APPLIANCE TESTING)
EICR (TEST AND INSPECTIONS)

**City &
Guilts**
Qualified

CALL: 07939316164
EMAIL: GFrancis1983@Gmail.com
gsfelectricalservices.co.uk



NORVETT

ELECTRONICS



Established 1955

Your local electrical contractors for domestic and commercial wiring,
installation and repairs.

Home automation & cinema.

ALFRISTON
(01323) 870485
enquire@norvett.com
www.norvett.com



Est.  *1993*

28
years
KINGS
FRAMERS

01273 481020

57 High Street, Lewes, East Sussex, BN7 1XE

info@kingsframers.com

www.kingsframers.com

NOTES FROM SAINT PETER AD VINCULA - FOLKINGTON



Church Wardens

Mrs Sabrina Harcourt-Smith

01323 482 036

Mr Alan Best

01323 487 754

SEPTEMBER AND EARLY OCTOBER SERVICES AND SUMMER NEWS FROM FOLKINGTON CHURCH AND VILLAGE

Services for September

**Sunday September 5th ~ 10.30am ~ Holy Communion ~
The Benefice Ministry Team with The Reverend Prebendary
Stephen Stukes or The Reverend Christyan James**

**Sunday September 12th ~ 10.30am ~ Mattins ~ The Reverend Neville
Manning
Announcements to include an update on previous day's "Ride and Stride".**

Sunday September 19th ~ 10.30am ~ Mattins ~ to be confirmed

**Sunday September 26th ~ 10.30am ~ Mattins for HARVEST THANKSGIVING
The Reverend Malcolm
Elwis**

Refreshments after the Service

**Collection for donations - in kind - for the Eastbourne FoodBank (Trussell
Trust)**

**Sunday October 3rd ~ 10.30am ~ Holy Communion ~ The
Benefice Ministry Team with The Reverend Prebendary
Stephen Stukes or The Reverend Christyan James**

**Saint Peter's continues to be open for prayer on Wednesday/Friday and
Sunday, and for part of Saturday.**

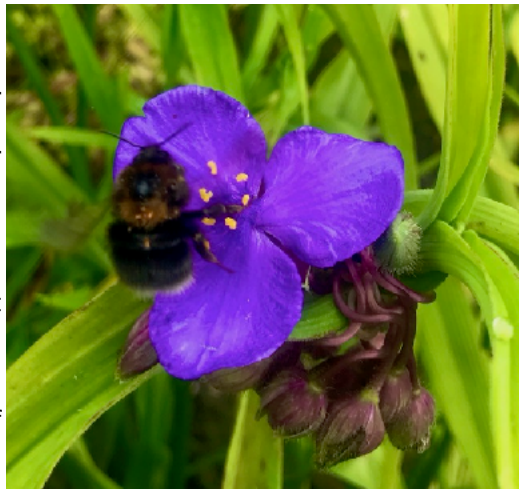
Late Summer News From St. Peter's Church, Folkington

July services at St Peter's included Sea Sunday in aid of the Mission to Seafarers on July 11th, taken by The Reverend Malcolm Elwis. For many years we have proudly been a Parish Link with the Seafarers. Malcolm talked about the valuable work that they do in ports all over the world.



On July 25th we welcomed The Reverend Colin Pritchard, an old friend and supporter whom we had not seen for many months. He celebrated the Sunday of Saint James the Apostle, patron of Pilgrimages. Nathaniel Best played rousing hymns and Colin talked about the history and value of pilgrimages.

On Saturday July 17th we were happy to welcome Emily Buckland and Aston Russell for their wedding. The Reverend Christyan James, Associate Priest in the Benefice of the Cuckmere Churches conducted the marriage. Emily and Aston both come from the local parish of Hellingly and around thirty family and friends took part in the service. Miles Hook played the piano most beautifully for the hymns and other music including Bach's 'Jesu Joy of Man's Desiring.' Lovely cream flowers framed the ancient stone entrance to the porch and decorated the altar. In his address Christyan spoke about the strength and power of love. After the service and amid clouds of pretty confetti, Emily and Aston went down the hill to Folkington Manor for their Reception. From St Peter's we all wish them every happiness in their married life together.



On July 29th many local church wardens, including your own two from St. Peter's, attended a service in Saint Andrew's Church, Alfriston to be sworn in to their office for the next year. The ceremony was taken by The Venerable Martin Lloyd Williams, Archdeacon of Brighton and Lewes. Before the service of hymns, prayers and an address from

Archdeacon Martin, delicious refreshments were enjoyed in the Village Hall on The Tye. It was the first time for many months of ` lockdown ` that so many wardens from different parishes in our Archdeaconry could meet and exchange news and share a service together. It was a welcome and enjoyable evening for everyone.

We are deeply sorry to record here the sad news of the recent death on July 28th of Rufus Voorspuy, who was brought up and lived in Folkington for many years. He was a race - horse trainer, loved the Downs and was always, with his family, most supportive of St Peter's Church, serving on the PCC. We send our deepest sympathy and condolences to his family and offer our prayers for them at this time.

The Ride and Stride

The Ride and Stride will be taking place on Saturday September 11th between 09.00 and 17.00. We will be selling books and plants for with refreshments being available unless the Covid rules change. Masks and sanitising hands will continue.

There are still sponsor forms available from Gwyneth Clarke 01323 721005

The Sussex Historic Churches Trust, founded in 1956, offers grants for essential repairs for churches of architectural or historic interest in Sussex.

Coincidentally, Folkington Place, adjacent to the church, will be opening their garden in aid of The Friends of Eastbourne Hospitals from 10.30 until 16.00. A great charity to support.

We hope to see as many people as possible visiting Folkington that day.

We look forward to your support.

Please can you continue collecting bottle tops, wool, ribbon, cards and stamps for The Friends of Eastbourne Hospital. They are still beavering away, more so, since the pandemic. Collection boxes can be found by the organ in church. Thank you.

PUZZLE SOLUTIONS

7	4	6	8	3	5	1	2	9
5	9	2	7	1	4	3	8	6
8	1	3	6	2	9	7	4	5
9	6	1	2	4	3	5	7	8
3	5	7	9	6	8	2	1	4
4	2	8	1	5	7	9	6	3
2	3	5	4	8	1	6	9	7
1	7	4	5	9	6	8	3	2
6	8	9	3	7	2	4	5	1

5	3	6	9	1	8	7	2	4
1	2	4	3	6	7	8	5	9
9	8	7	5	2	4	6	1	3
3	7	2	4	5	6	9	8	1
8	5	9	7	3	1	2	4	6
4	6	1	2	8	9	3	7	5
7	9	3	1	4	2	5	6	8
2	4	8	6	9	5	1	3	7
6	1	5	8	7	3	4	9	2

Justine Coley
Home Care Executive

**JUST in TIME
LOCAL CARE SERVICES**

Wick Street
Arlington
07910148213
justintimelocalcareservices@gmail.com



JUST in TIME LOCAL CARE SERVICES

Personal and Pet Care
House Sitting
Assistance with Outings or Appointments
Housework



BENEFICE NOTICES AND SERVICES

(Service dates and times start on the rear cover of the magazine)

Pastoral Prayer or Talk

I am available to speak to people on the phone and I am also able to pray with people on request in church at Morning or Evening Prayer but keeping Covid restrictions and with no other people present. If you are struggling and would find either helpful please get in touch to arrange.

If anyone needs help of any kind -practical or spiritual - please get in touch: Tel: 01323 870512

Prayer Requests

If you have any prayer requests please pass them on – they can either be kept confidential or included in intercessions at our online services.

Suggestions or Comments

Suggestions and comments as to what is offered online or what might be offered in addition are welcomed.

Revd Peter Blee is available to talk and to offer help in any way possible tel: 01323 870512 or email peter.blee@berwickchurch.org.uk.

The times of the services are subject to change. Please look at the website (www.sussexdownlandchurches.org.uk) and check carefully on the Sunday link emails. If in any doubt please contact Stephanie Lewis-Grey on 01323 811136 or email at benefice.administrator@berwickchurch.org.uk

Our churches remain open for private prayer and reflection every day.

METHODS

SUNDAYS

9.00 a.m. Sunday Morning Prayer Zoom

A link is sent out and you simply need to click on this link to join the Zoom.

WEDNESDAYS

9.30 a.m. Wednesday Morning Prayer Zoom

A link is sent out and you simply need to click on this link to join the Zoom.

If you would like to receive the 'links' to these by email each week please contact Stephanie, the administrator:

benefice.administrator@berwickchurch.org.uk or tel: 811136.

Benefice Services for September and Early October

September 5th

8.00 am	Alciston ~ BCP	Frank Fox-Wilson
9.00 am	Zoom ~ Morning Prayer	tbc
10.00 am	Wilmington ~ Holy Communion	Frank Fox-Wilson
11.00 am	Berwick ~ Holy Communion	tbc

September 12th

9.00 am	Zoom ~ Morning Prayer	tbc
9.30 am	Alciston ~ Holy Communion	Peter Blee
10.00 am	Arlington ~ Holy Communion	Frank Fox-Wilson
11.00 am	Berwick ~ Holy Communion	Peter Blee

September 19th

9.00 am	Zoom ~ Morning Prayer	tbc
9.30 am	Selmeston ~ Morning Prayer	tbc
10.00 am	Wilmington ~ Morning Prayer	Peter Blee
11.00 am	Berwick ~ Holy Communion	Peter Blee

September 26th

9.00 am	Zoom ~ Morning Prayer	Peter Blee
9.30 am	Alciston ~ Morning Prayer	tbc
10.00 am	Arlington ~ Holy Communion	Peter Blee
11.00 am	Berwick ~ Patronal Festival	Peter Blee

October 3rd

8.00 am	Alciston ~ BCP	Peter Blee
9.00 am	Zoom ~ Morning Prayer	tbc
10.00 am	Arlington ~ Harvest Festival	Peter Blee
11.00 am	Berwick ~ Holy Communion	Peter Blee

Please note that these services are quite liable to change!

Sunday Zoom Morning Prayer will be held at 9.00 am.

You can be sent a link to join these services please contact the Benefice Administrator at benefice.administrator@berwickchurch.org.uk to be added to the mailing list to receive this link.

Wednesday Zoom Morning Prayer will be held at 9.30 am each Wednesday. Please request a link as above.

If you would like to receive weekly notification about services (the Sunday Link) please email: benefice.administrator@berwickchurch.org.uk and the Administrator will add your email to the mailing list.